



Whether it's for business or pleasure, our
new facilities offer

Something for everyone!

Visit our website

Or call 530-677-2231 for more information

www.cameronpark.org

Cameron Park Community Services District
2502 Country Club Drive
Cameron Park, CA 95682

Cameron Park
Community Services District

Proudly Introduces....

Our New Community Center



"A special place to live"
is also

A great place to work and play!

2502 Country Club Drive
Cameron Park, CA 95682

(Next to the Cameron Park Library)

Now Open!

Looking for that perfect venue to hold your next business or social event? Check out our *Assembly Hall*.



This space can accommodate up to 356 for assembly style seating and up to 252 for banquet style seating. The hall is equipped with a digital projector and a 12x12 foot screen for presentations. For smaller events and *Meetings*, the room can be divided with floor to ceiling sound-dampening dividers complete with doors to transition from one space to another, perfect for breakout sessions.

Are you part of a Theatre, Dance, or Musical group in need of place to hold productions? Our assembly hall also features a *Stage* that comes complete with a dressing room which includes a restroom facility, several rows of moveable and directional lights, and state of the art lighting and multi-media

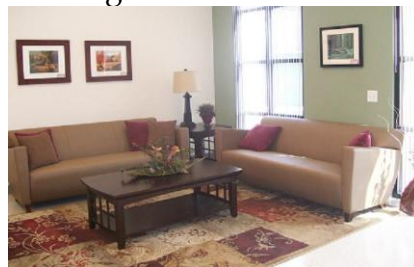
controls. There is also a loading dock directly off the back of the stage to make loading and unloading a snap. And the stage is wheelchair accessible thanks to an elevator system.

What facility would be complete without a *Commercial-Grade Kitchen*.



This beautiful kitchen boasts Wolf gas convection ovens, a six burner heavy duty gas range and griddle, two microwaves, commercial refrigeration with freezer, plus more! And also has a separate loading area.

Our *Social Center* will host a variety of ongoing activities for our Sensational Seniors, and can be scheduled for group meetings.



We also have a new *Dance/Exercise Studio* with a sprung floor for exercise and ballet programs. A tap mat is available for more rigorous forms of dance.



Our Center also features a *Gymnasium* and *Aquatics Center*.



The gymnasium has bleacher seating for over 200, six retractable baskets to accommodate regulation, half, and quarter court play, and can be set for side by side Volleyball. Our aquatics center boasts a beautiful rim flow design pool with 10 lanes for competition swimming and a 1600 sq. ft. area for program activities for a combined recreation swim area of 7225 sq ft. The pool area has access to shower and locker facilities. The concession stand is open to all.